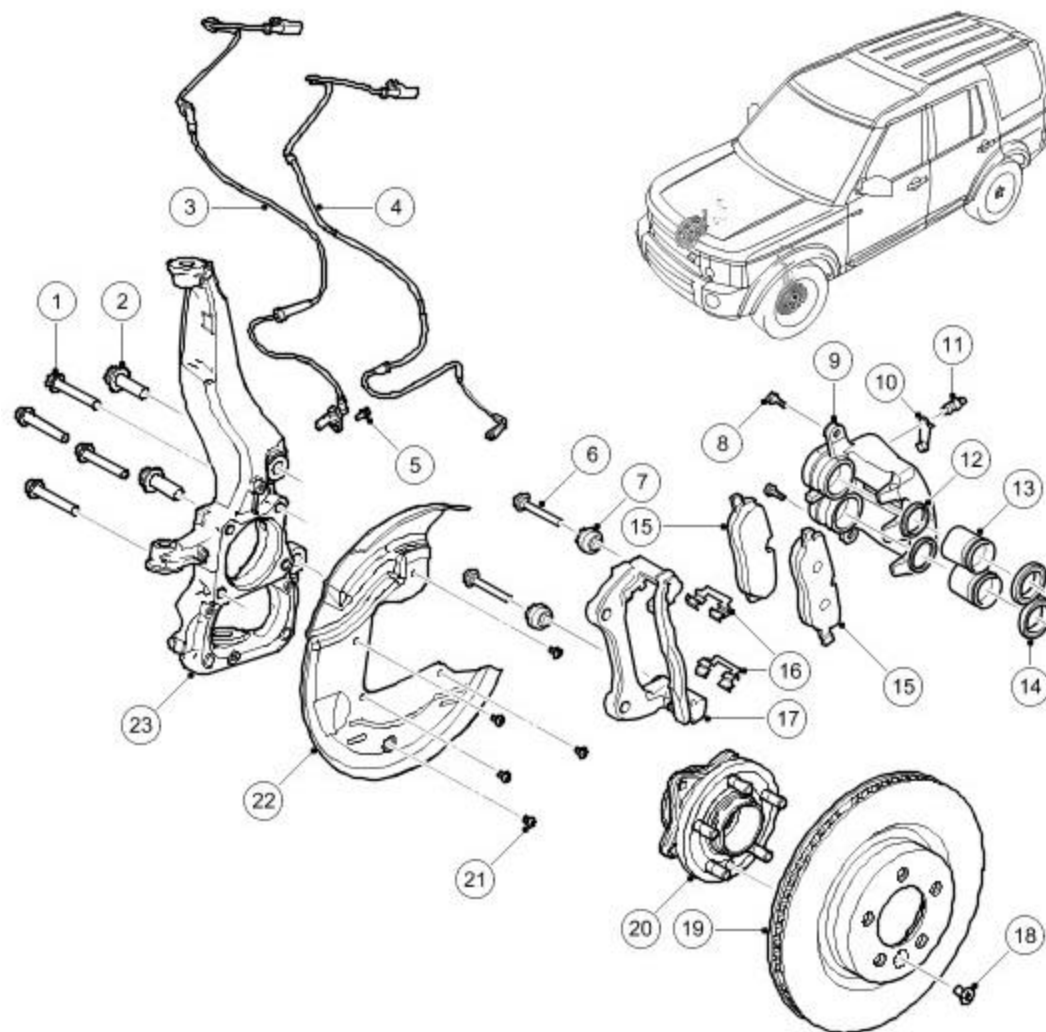


Front Disc Brake

COMPONENT LOCATIONS



E47992

Item	Part Number	Description
1	-	Hub bearing assembly bolt (x 4)
2	-	Caliper bolt (x 2)
3	-	Wheel speed sensor
4	-	Brake pad wear sensor lead
5	-	Wheel speed sensor bolt
6	-	Guide pin (x 2)
7	-	Guide pin dust cover (x 2)
8	-	Guide pin bolt (x 2)
9	-	Caliper body
10	-	Bleed screw dust cap
11	-	Bleed screw
12	-	Piston seal (x 2)
13	-	Piston (x 2)

14	-	Piston dust cover (x 2)
15	-	Brake pad
16	-	Brake pad retainers
17	-	Caliper carrier
18	-	Brake disc retaining bolt
19	-	Brake disc
20	-	Hub bearing assembly
21	-	Dust shield screw (x 5)
22	-	Dust shield
23	-	Front knuckle

GENERAL

The front brakes each consist of a twin piston brake caliper, a ventilated brake disc and a dust shield. 4.4L models feature a different caliper and a larger diameter brake disc than the 4.0L and 2.7L Diesel models. The dust shield is common on all derivatives.

The brake caliper is attached to the rear of the front knuckle. The brake pads are made from an asbestos free material. The inboard brake pad of the left front brake incorporates a wear sensor.

When hydraulic pressure is supplied to the caliper, the pistons extend and force the inner pad against the disc. The caliper body reacts and slides on the guide pins to bring the outer pad into contact with the disc.

The front brake pad wear sensor is connected in series with the rear brake pad wear sensor, between the instrument cluster and ground. When a brake pad incorporating a brake pad wear sensor is approximately 75% worn, the brake pad wear sensor goes open circuit. When the instrument cluster detects the open circuit, it illuminates the amber Light Emitting Diode (LED) in the brake warning indicator. Vehicles with the high line instrument cluster also display an appropriate warning in the message center and sound a warning chime. For additional information, refer to [Instrument Cluster](#) (413-01 Instrument Cluster)

At the beginning of each ignition cycle, the instrument cluster performs a bulb check on the brake warning indicator: the indicator is illuminated amber for 1.5 seconds, red for 1.5 seconds, then goes off.